

Primary data and Entomological collections: utility, best practices and challenges.

Dr. Marianna Simões
Researcher & Curator Coleoptera
Senckenberg Deutsches Entomologisches Institut (SDEI)



marianna.simoes@senckenberg.de

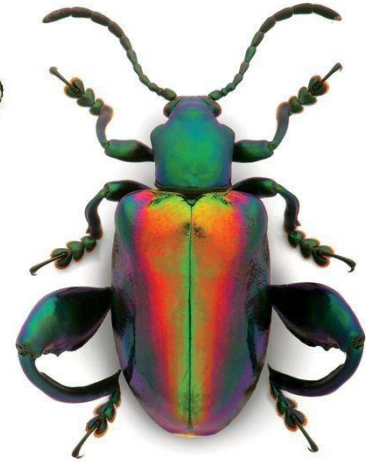
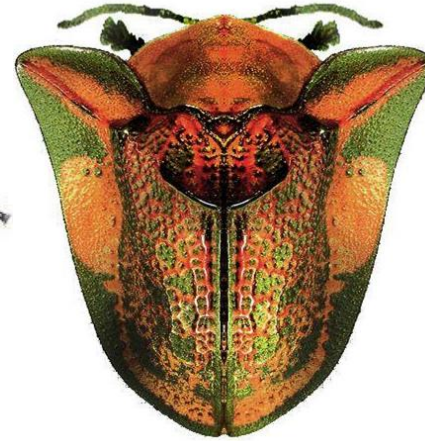


[@beetler785](https://twitter.com/beetler785)



[msimoes123](https://github.com/msimoes123)

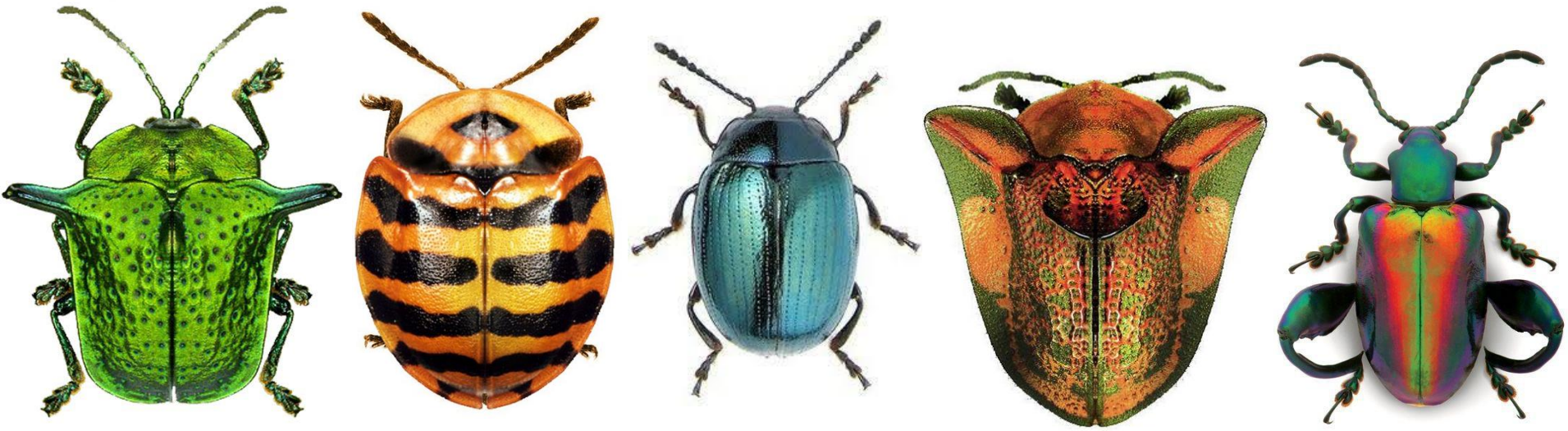
SENCKENBERG



Beetles



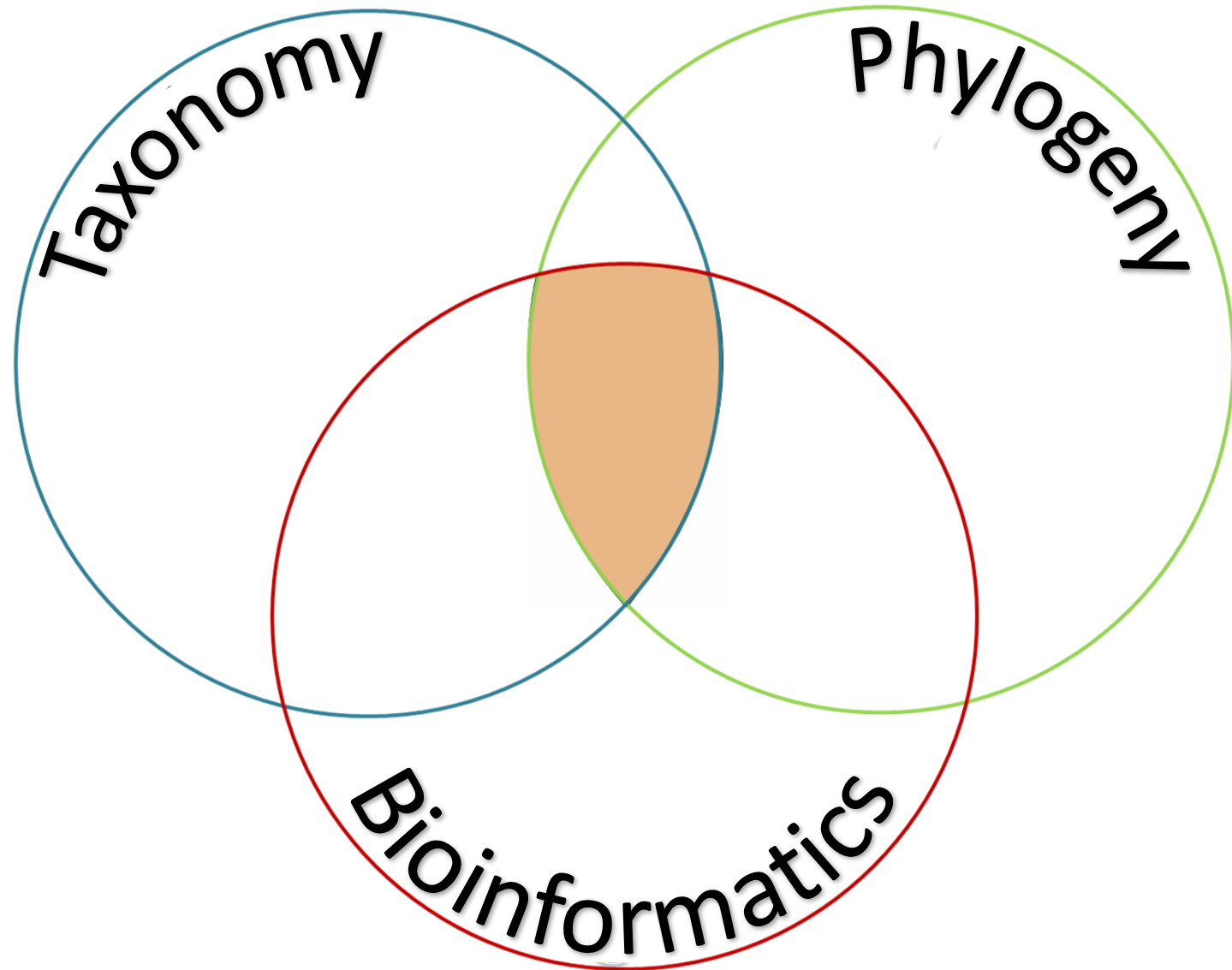
SENCKENBERG



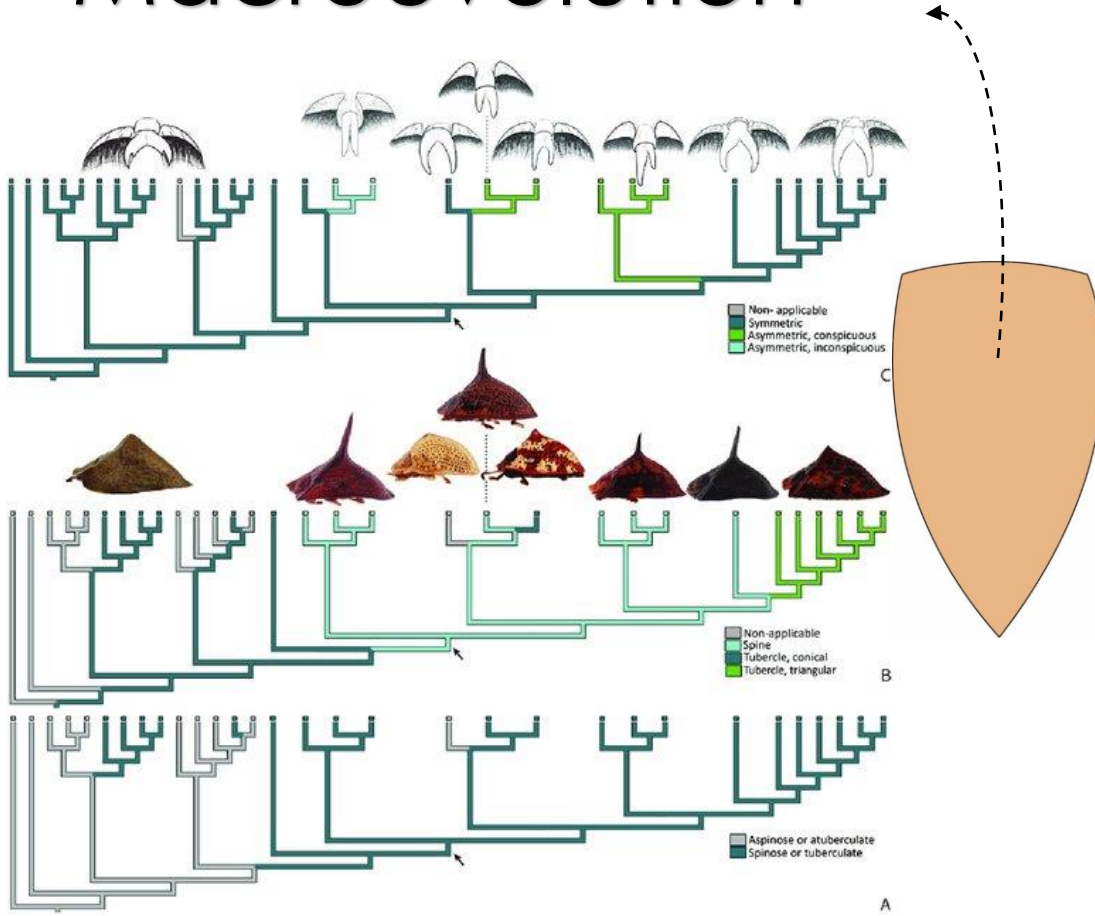
Leaf-beetles



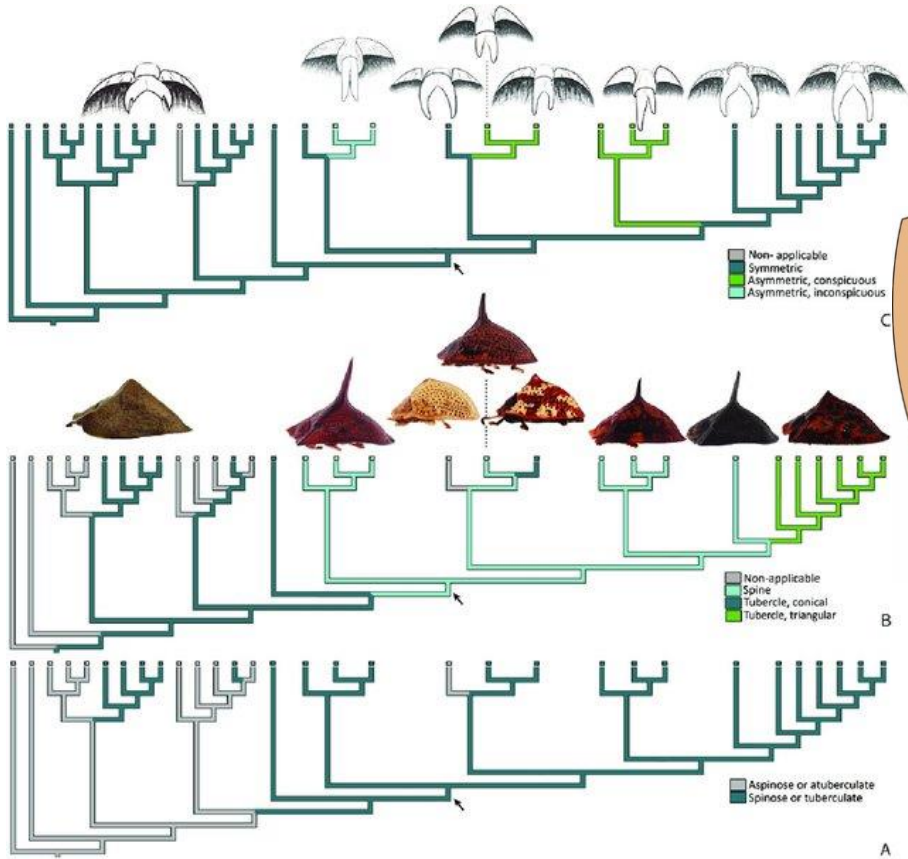
SENCKENBERG



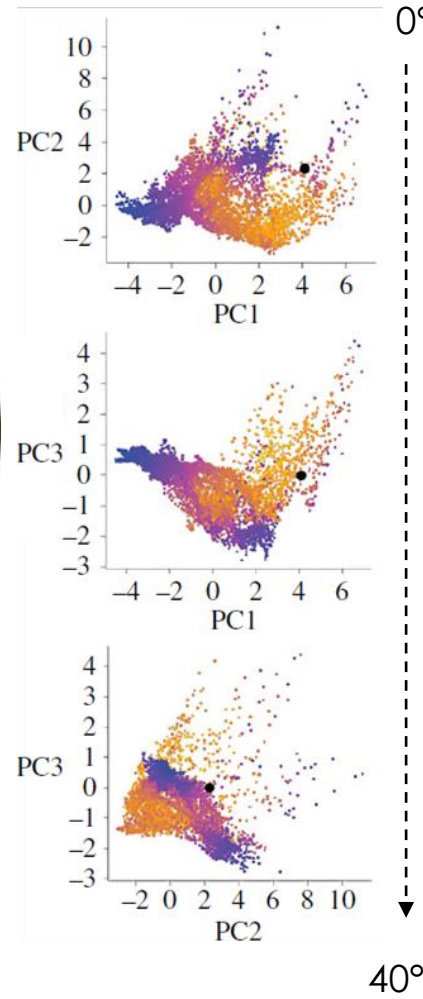
Macroevolution



Macroevolution



Simões et al, 2018



Simões et al., 2016

Macroecology

Collection-based Research

SENCKENBERG

Leocadio, Simões, 2020

Mesomphaliini

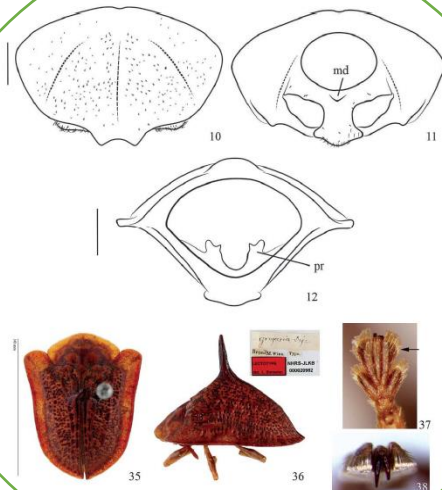
SUBSOCIALITY

SOCIALITY

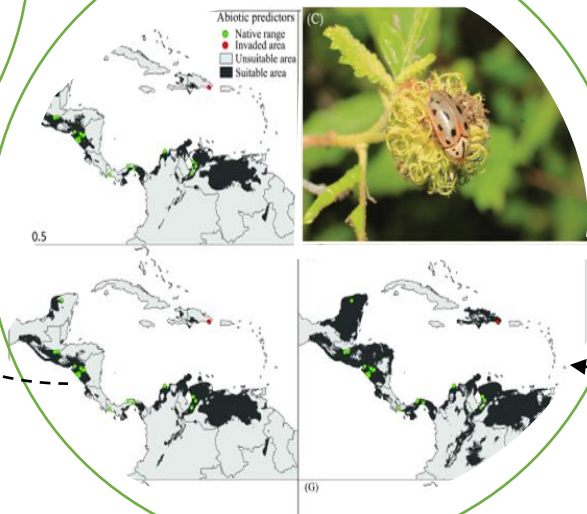
Outgroups

Morphology
Distribution
Ecology

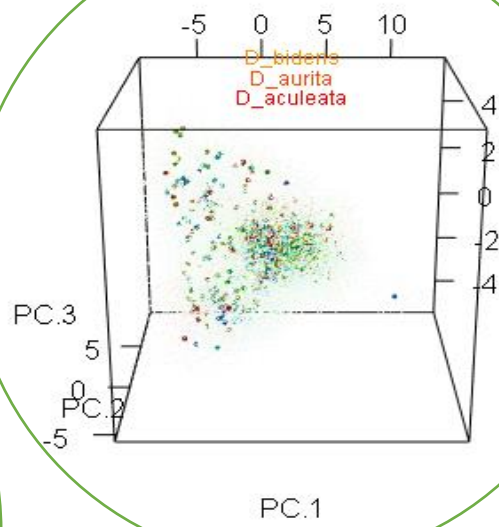
Simões et al, 2014



Simões Peterson, 2017



Simões et al, 2016



SENCKENBERG

Biological collections



USNM



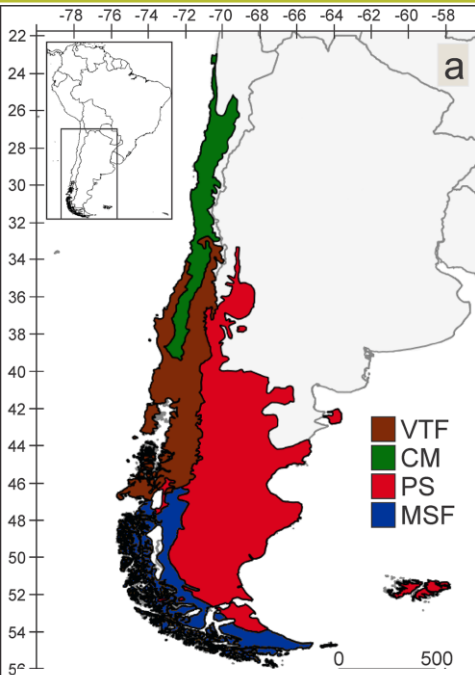
MfN, Berlin



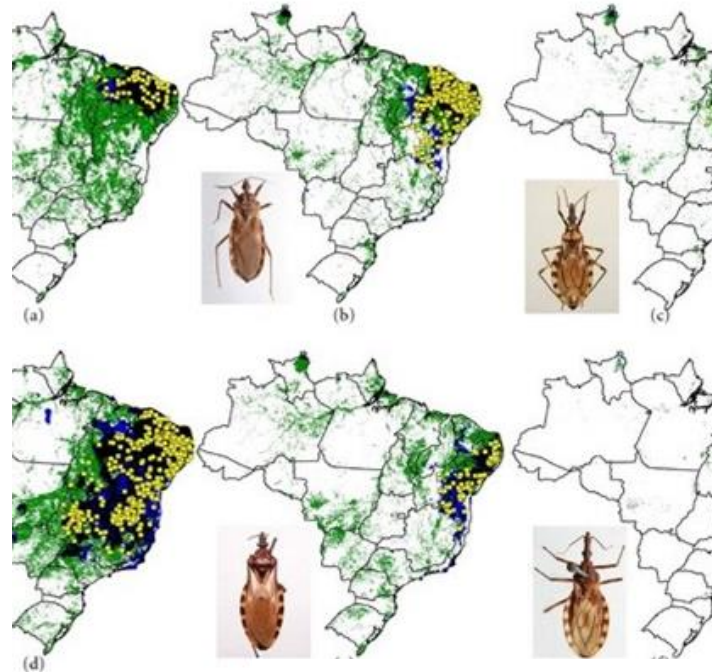
SNG, Gorlitz

SENCKENBERG

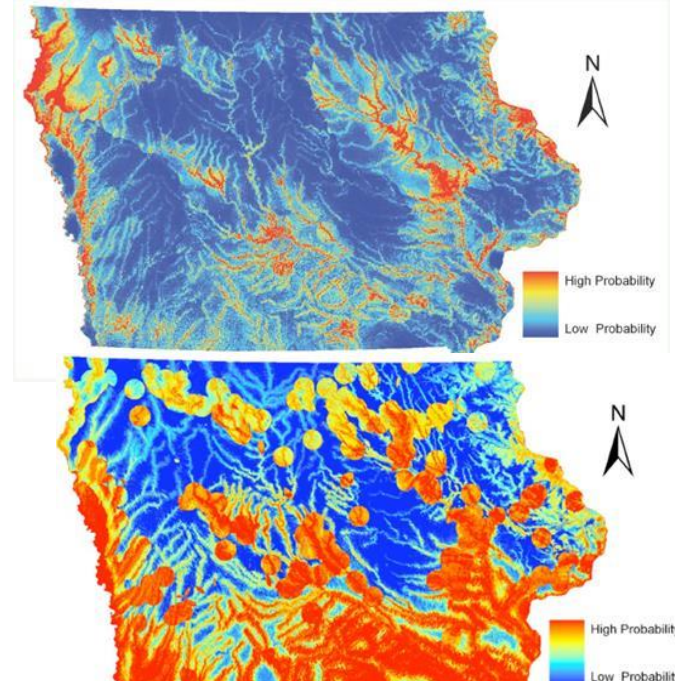
Entomology and distributional ecology



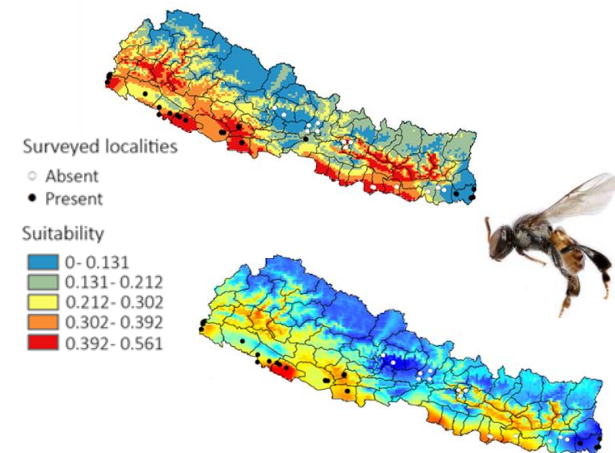
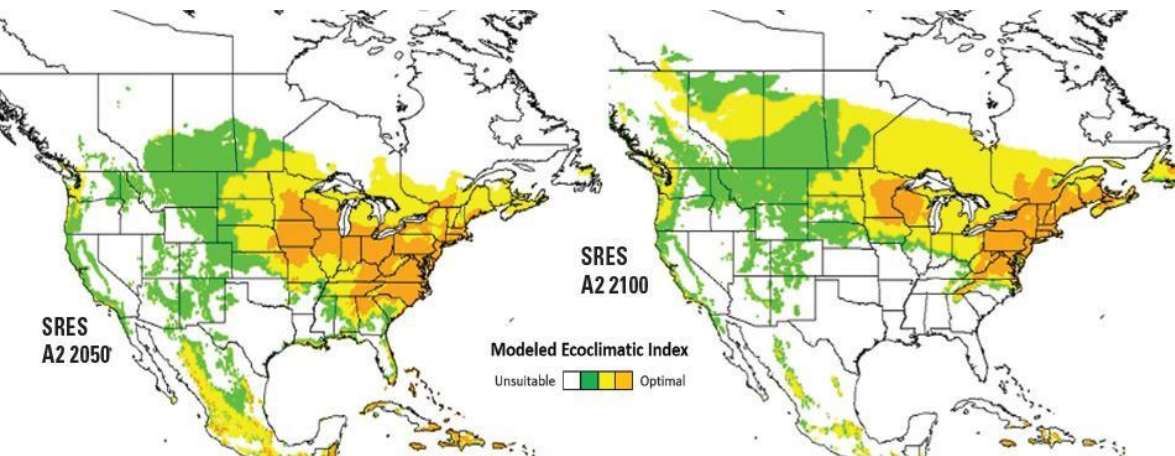
Montemayor et al 2017



Gurgel Gonçalves et al 2012



Larson et al 2010

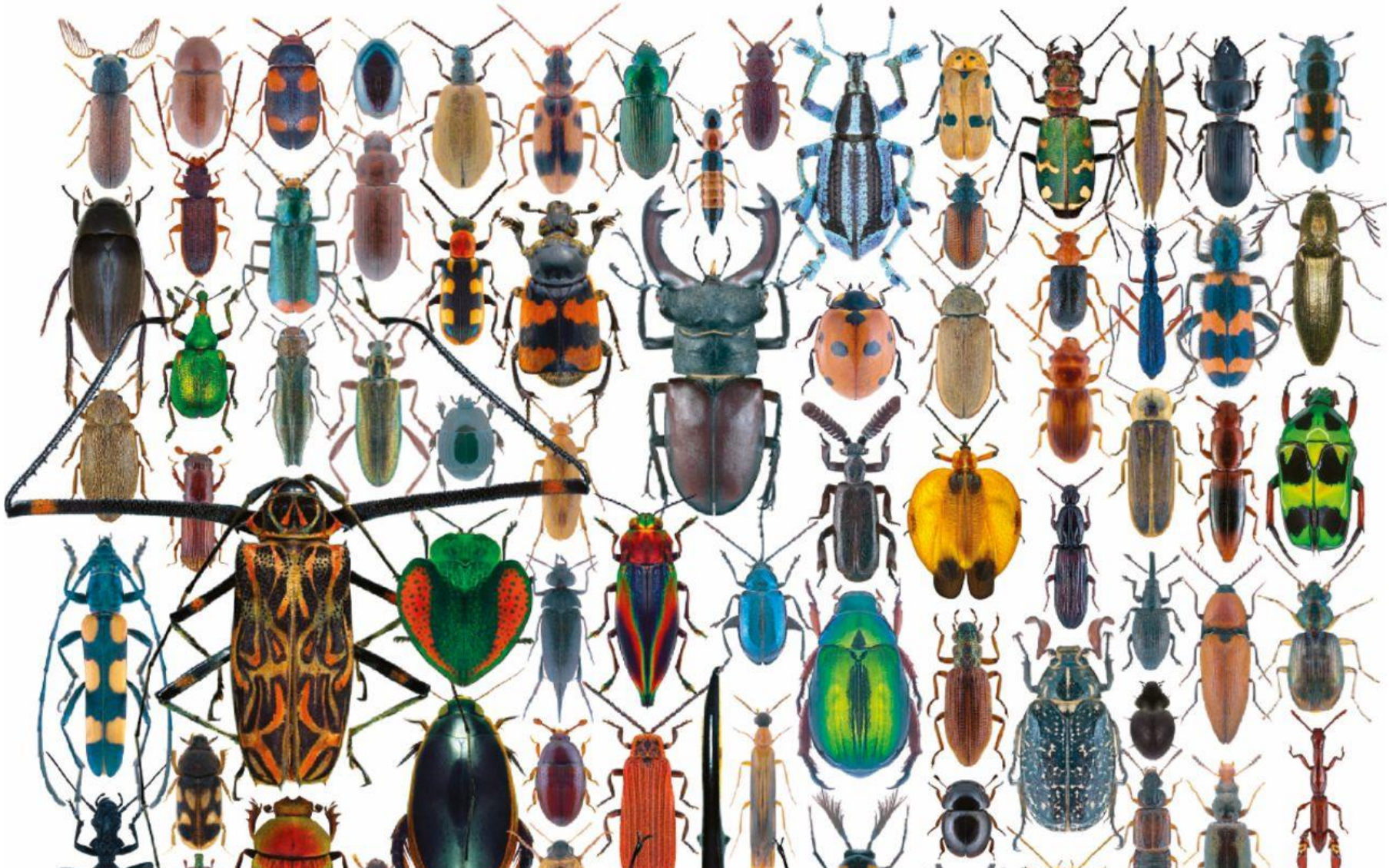


Bhatta, Simões et al., 2019

Source: Erica Kistner 2017, in Environmental Entomology)

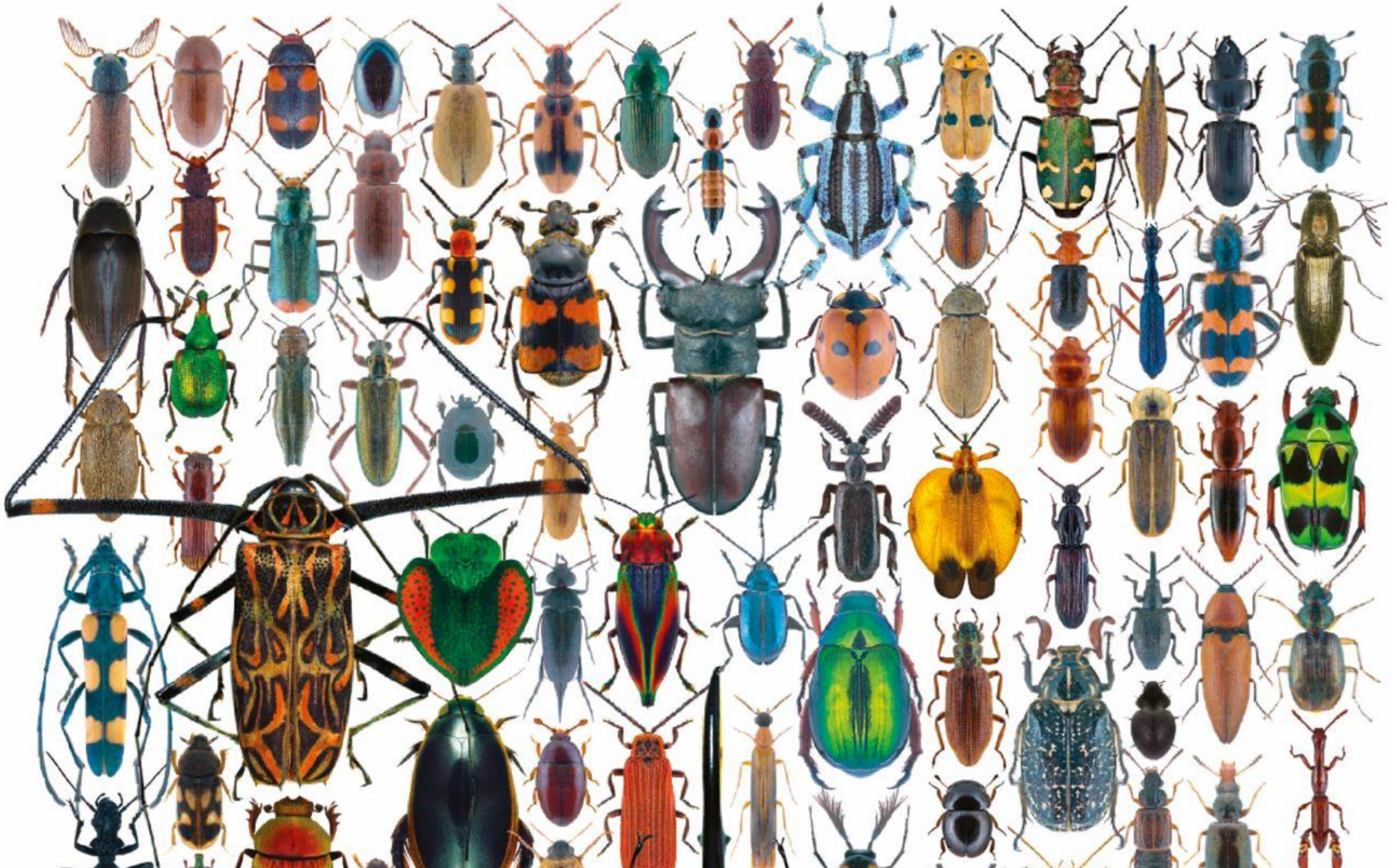
SENCKENBERG

Space: The Final Frontier



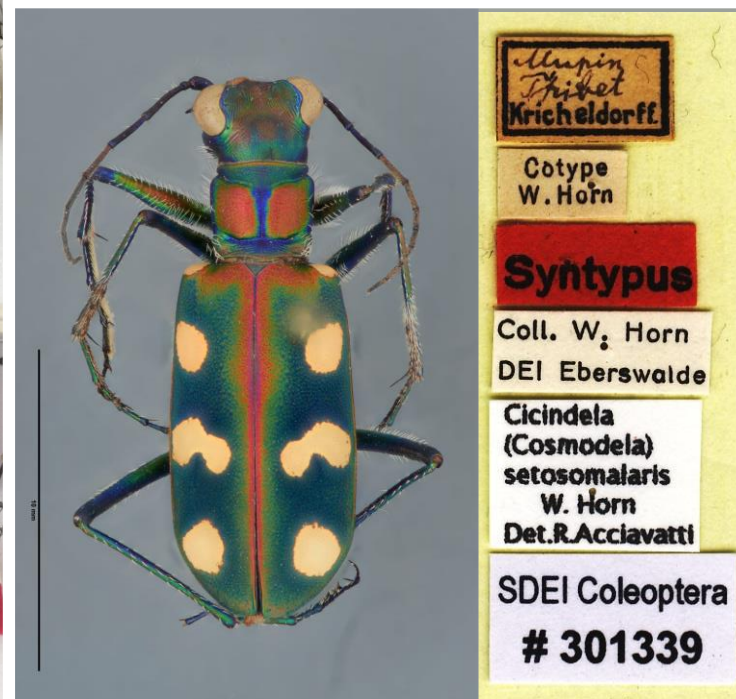
SENCKENBERG

Entomology: The Final Frontier



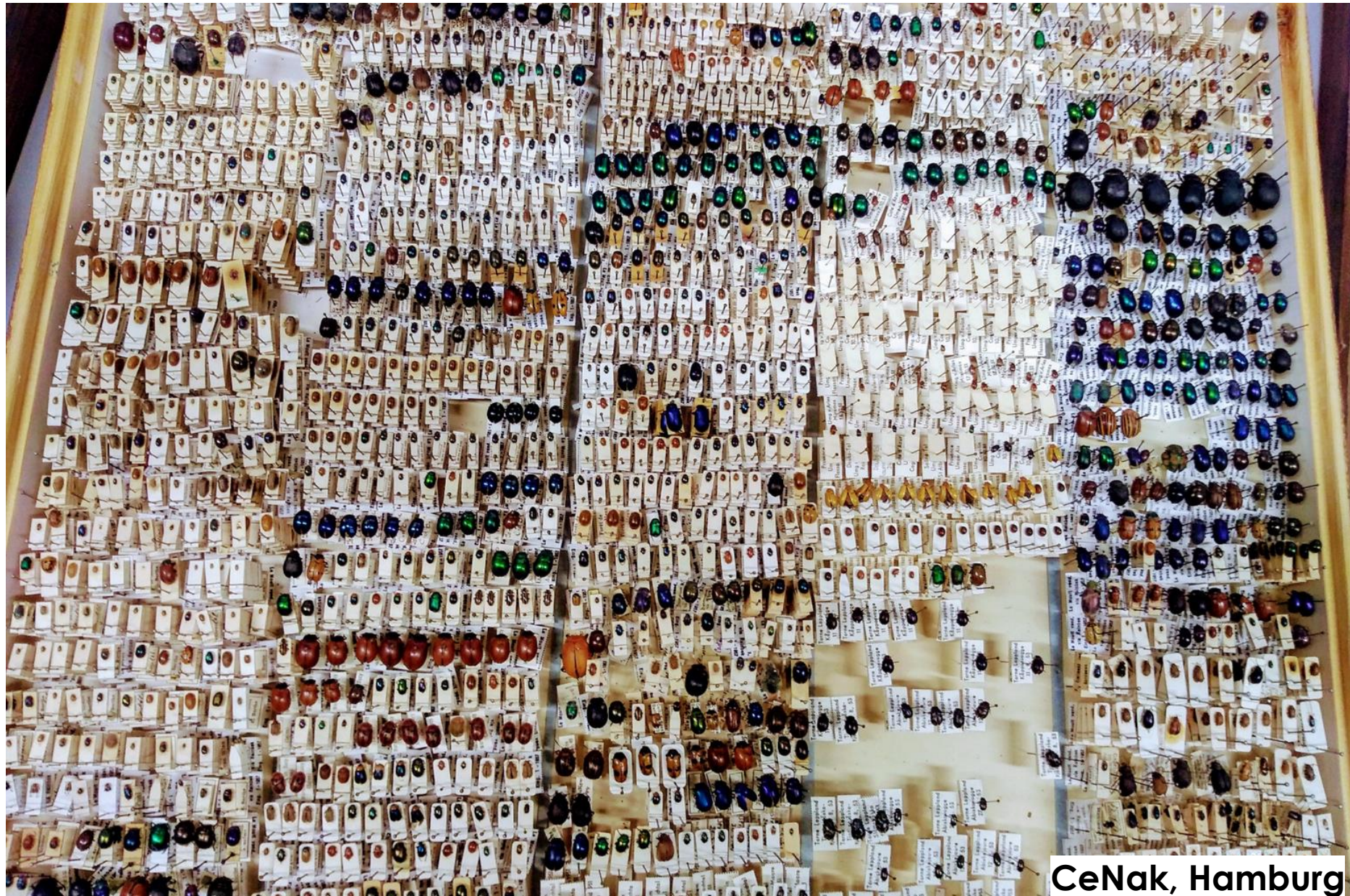
SENCKENBERG

Entomological collections



SENCKENBERG

Entomological collections



CeNak, Hamburg

SENCKENBERG

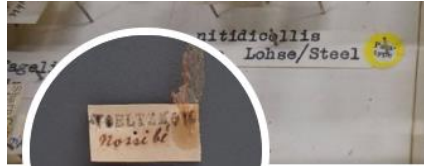
Entomological collections



CeNak, Hamburg

SENCKENBERG

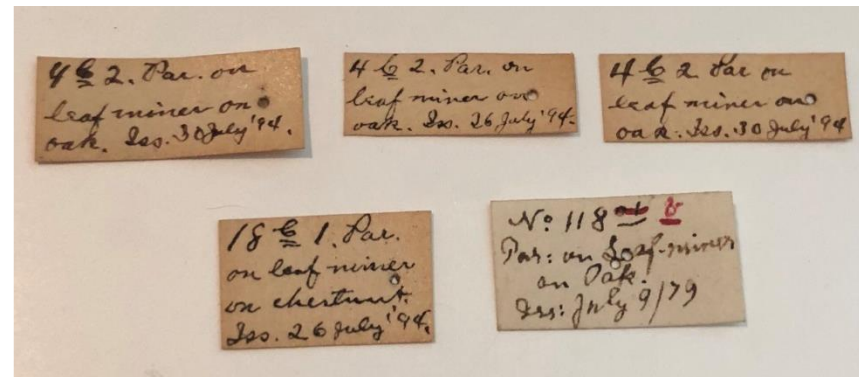
Entomological collections



White all Moss Lugs,
26.6.38 (Muller)
Renocera stralio
M₉ ♀

Upper
Tropical
N. 11/01

EntomologyTranslator
@EntoTranslator Follows you



A. Sollaant
n.o. Berger; G. Marang, Thure
Sumatra
4-12-1952

C. auratus, L.
Found by W. W. Barnes May 4, 1901
of Reading in a bunch
of radishes which
had come from
Covered Garden Market - but the
greenhouse, stated they had
common in Surrey.

Digitization

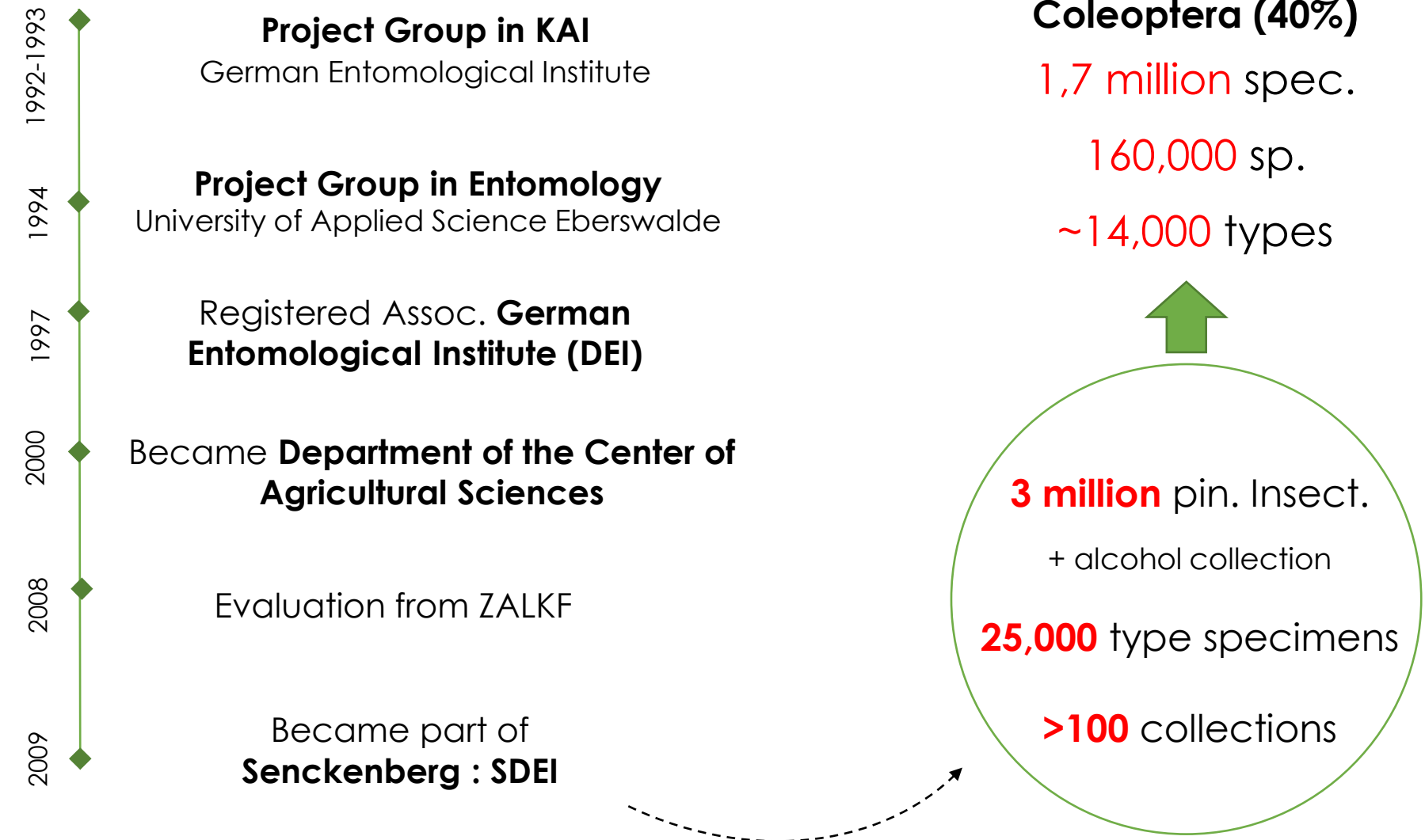
SENCKENBERG

Senckenberg Deutsches Entomologisches Institut (SDEI)



SENCKENBERG

Senckenberg Deutsches Entomologisches Institut (SDEI)



SENCKENBERG

Senckenberg Deutsches Entomologisches Institut (SDEI)

EdiCall: CARAB project



Digitization and **standardization** in
Senckenberg (SNG)

Dresden, Müncheberg, Frankfurt am Main

Types

Pilot Project

Create Workflow

Maximize Accessibility

SENCKENBERG

Senckenberg Deutsches Entomologisches Institut (SDEI)

Collections:

Col. Lucas von Heyden

(Coll. L. v. Heyden, ded. DEI 1915)

Col. Otto Leonhard

(Coll. O. Leonhard, ded. DEI 1929)

Col. B. Rensch

(Coll. B. Rensch, via F. Weber, ded. SDEI 2011)

Col. Dieter Hülbert

(Coll. D. Hülbert, ex ZALF, LSA; ded. DEI 2006)

Col. F. Weber

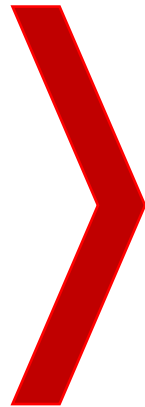
(Coll. F. Weber; ded. SDEI 2011)

Col. M. Moeck

(Coll. M. Moeck, ded. SDEI 2014)

Col. Peter Jaros

(Coll. P. Jaros, ded. SDEI 2015)



SENCKENBERG

Senckenberg Deutsches Entomologisches Institut (SDEI)

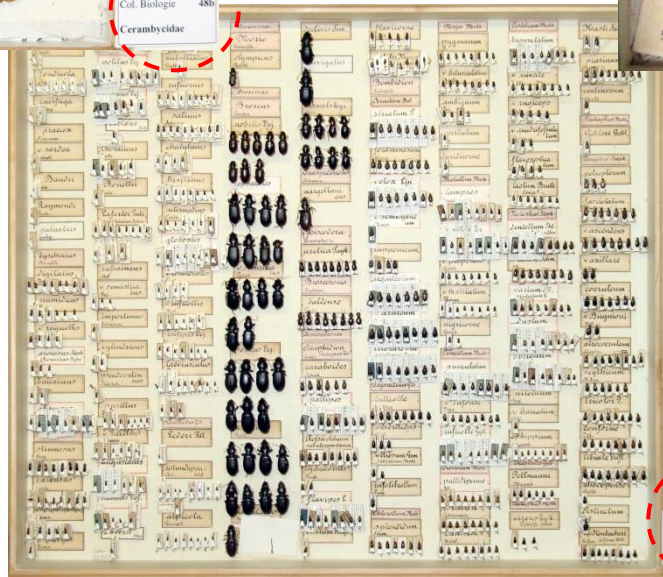
Digitization process

“Inventory 2009”

DEI 9
Bernsteininclusionen



DEI 9
Bernsteininclusionen



SENCKENBERG

Senckenberg Deutsches Entomologisches Institut (SDEI)

Digitization process

“Inventory 2009”

Biological

Fossils

Specimens

DEI
Bernsteininclusionen

Col. Biologie 48b
Cerambycidae

coll. Koltze 18

SENCKENBERG

Senckenberg Deutsches Entomologisches Institut (SDEI)

Assembling Collections

- Creation of location labels
- Creation of determination labels
- Preparation
- Systematic sorting and classification



SENCKENBERG

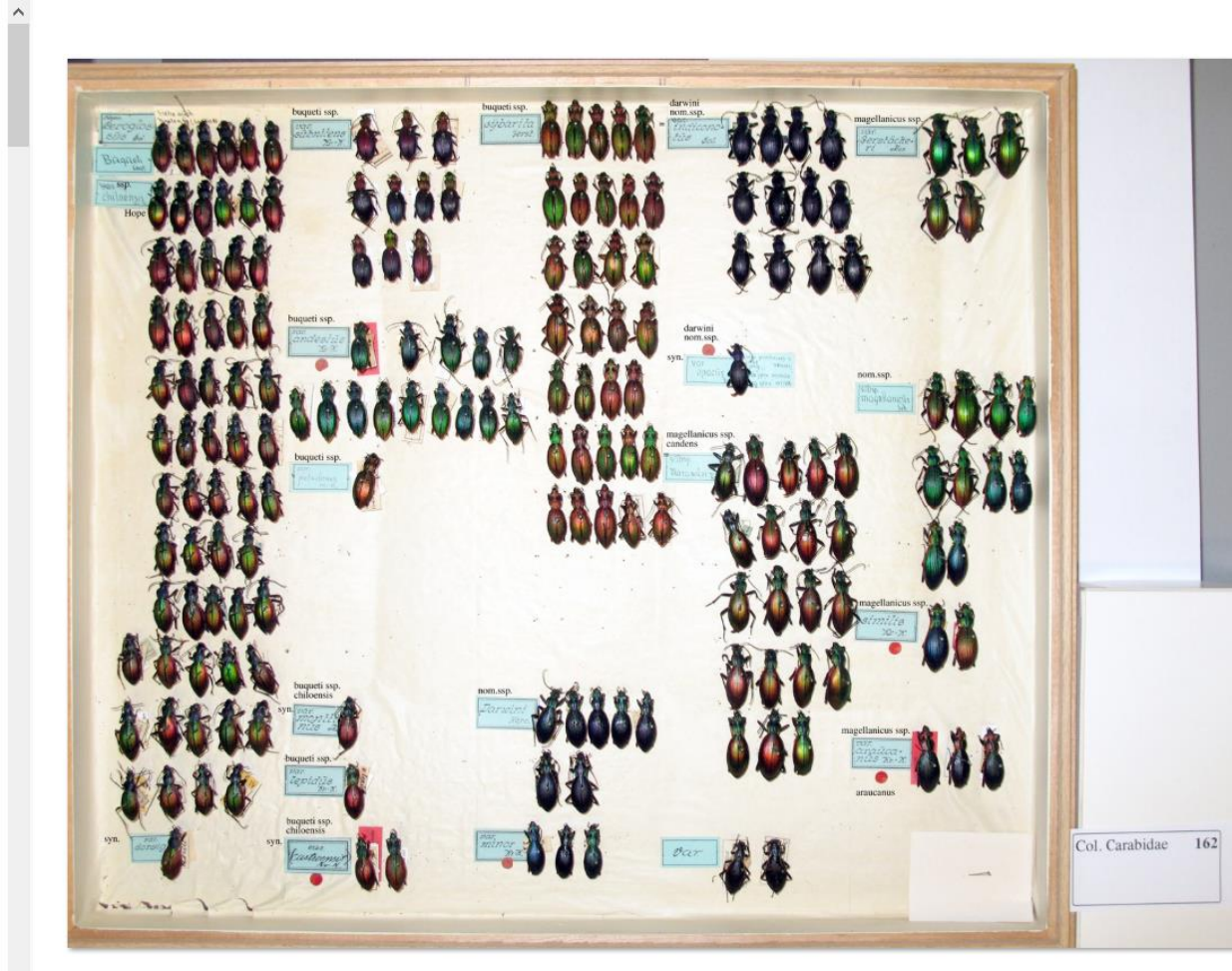
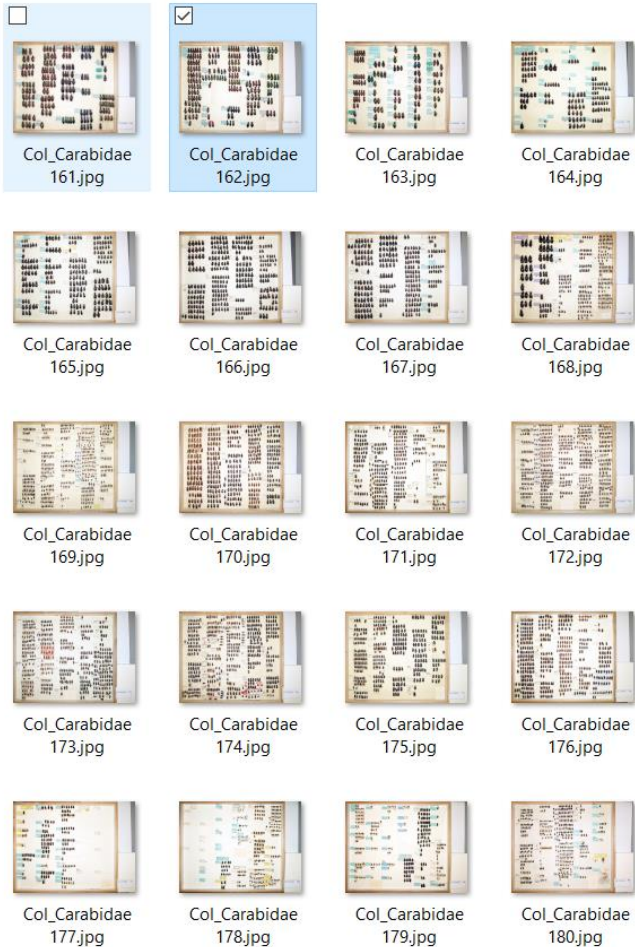
Senckenberg Deutsches Entomologisches Institut (SDEI)

Digitization process

Number of species

Number of specimens

Number of types



SENCKENBERG

Taxonomic assessment: Lutz Behne

Taxonomic Revision of the genus *Mesomphalia* Hope, 1839 (Insecta, Coleoptera, Chrysomelidae)

MARIANNA V. P. SIMÕES^{1,3} & MARCELA L. MONNÉ^{2,3}

¹Division of Entomology, Biodiversity Research Institute & Department of Ecology and Evolutionary Biology, University of Kansas, Lawrence, Kansas 66045, U. S. A. E-mail: mariannavpsimoes@gmail.com

²Museu Nacional, Universidade Federal do Rio de Janeiro, Quinta da Boa Vista, São Cristóvão, 20940-040, Rio de Janeiro, Brazil.

³Fellow of the Conselho Nacional de Desenvolvimento Científico e Tecnológico (CNPq)

Synonym

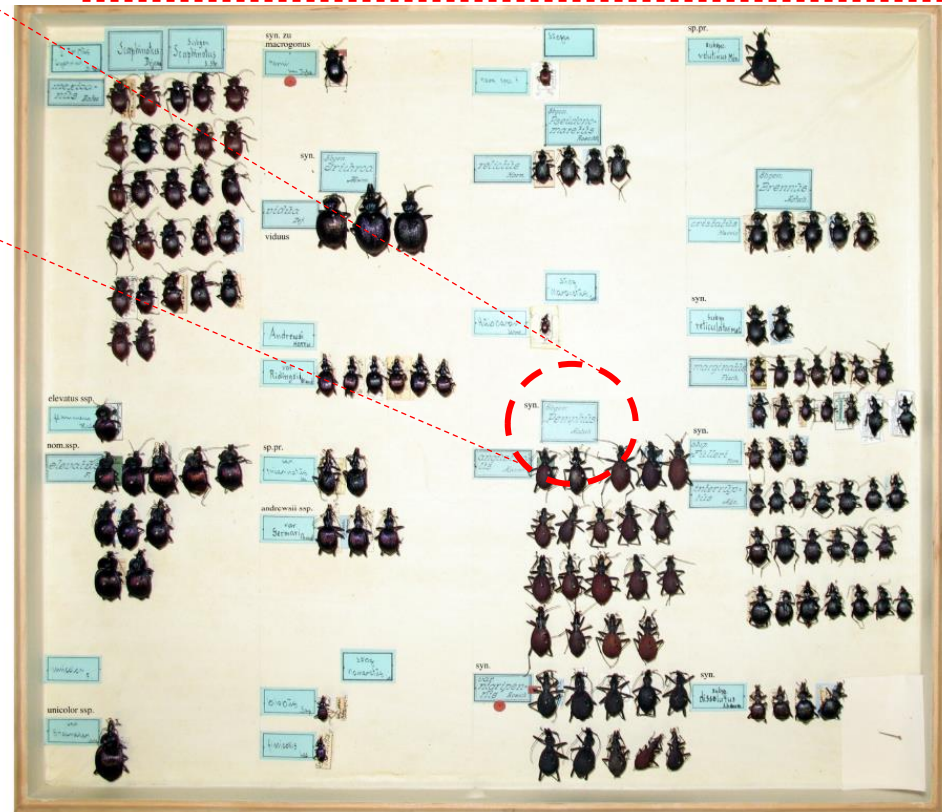
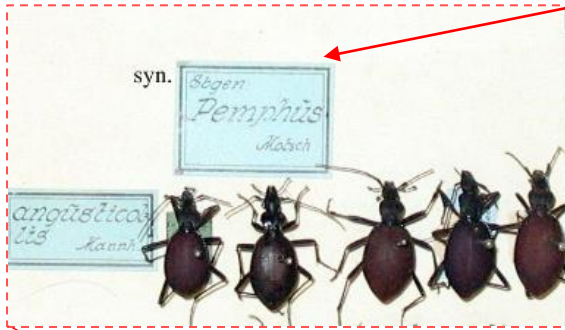
Mesomphalia gibbosa (Fabricius, 1781)

(Figs. 1–54, 91–97, 156, 158)

Cassida gibbosa Fabricius, 1781: 112; 1787: 65; 1792: 302; 1801: 403; Gmelin, 1790: 1638; Olivier, 1790: 388; 1808: 928; Herbst, 1799: 346; Schönherr, 1817: 225.

Mesomphalia gibbosa: Hope, 1839: 94; 1840: 91; Boheman, 1850: 223; 1856: 38; 1862: 102; Gemminger & Harold, 1876: 3632; Wagener, 1881: 63; Spaeth, 1901: 339; 1914: 33; Blackwelder, 1946: 737; Borowiec, 1996: 192; 1999: 117; Simões & Monné, 2008: 713; Flint *et al.*, 2008: 200; 2009: 589; Borowiec & Takizawa, 2011: 448.

Stolas gibbosa: Haitlinger, 1991: 397.



SENCKENBERG

Taxonomic assessment: Lutz Behne

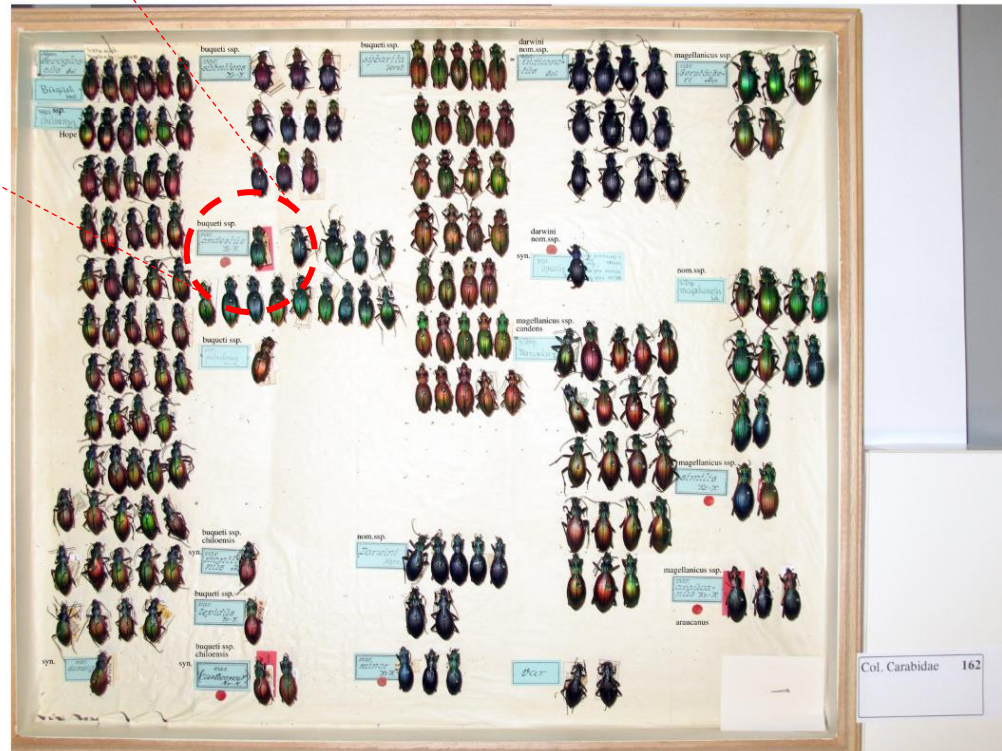
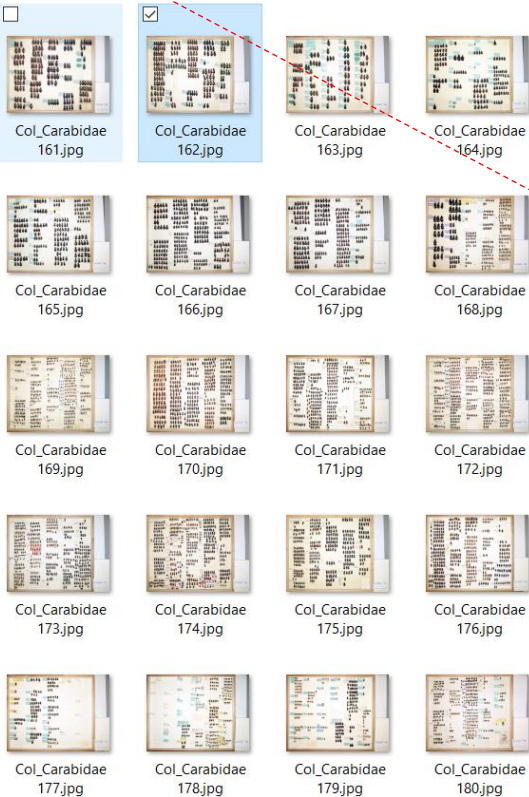
subspecies

buqueti ssp.

var.
andestius
Kr. N.



Type

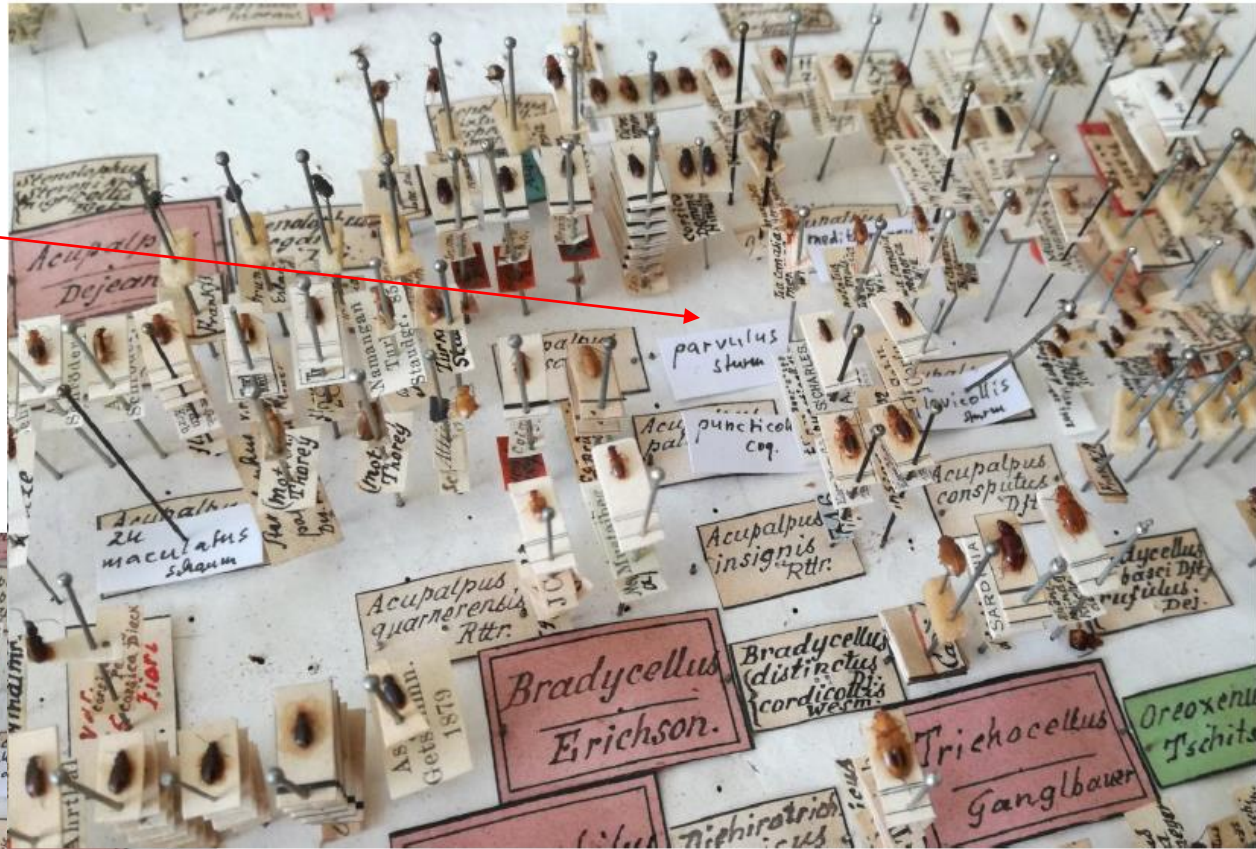


Col. Carabidae 162

SENCKENBERG

Taxonomic assessment: Lutz Behne

Taxonomic
Corrections



SENCKENBERG

Database

Paradox

Code for species

Code + Class

Syst_cod	Syst_cod_Fam	Code Luchtnihi	Suborder_nr	Suborder	Fam_gr_nr	Fam_gruppe	Fa_nr	FAMILY	UF_nr	SUBFAM	TRIB_nr	TRIBUS	Subtr	SUBTRIBUS	G_nr	GENUS	UG_nr	SUBGEN	UnterArt_nr	SPECIES
1	1727	142205123953	40	Adephaga			50	Carabidae	50	Cicindelinae	20	Cicindelini	20	Cicindelina		Cylindera			x	ramenensis
2	18033	142205123818	50	Polyphaga	20	Staphylinidea	60	Staphylinidae	310	Paederinae						Pinobius				vicinus
3	18255	142205123826	50	Polyphaga	20	Staphylinidea	60	Staphylinidae	320	Staphylininae						Platyprosopus				laevicollis
4	18719	142205123958	40	Adephaga			50	Carabidae	50	Cicindelinae	30	Collyridini	10	Collyrina		Collyris			x	dormeri
5	19054	172145220110	40	Adephaga			50	Carabidae	50	Cicindelinae	60	Megacephalini	20	Megacephalina		Pseudotetracha		Pseudotetracha	x	corpulenta
6	19265	142205123954	40	Adephaga			50	Carabidae	50	Cicindelinae	20	Cicindelini	30	Dromicina		Dromica			x	jordani
7	19290	142205123954	40	Adephaga			50	Carabidae	50	Cicindelinae	20	Cicindelini	30	Dromicina		Dromica			x	spectabilis
8	19291	142205123954	40	Adephaga			50	Carabidae	50	Cicindelinae	20	Cicindelini	30	Dromicina		Dromica			x	spectabilis
9	19301	142205123954	40	Adephaga			50	Carabidae	50	Cicindelinae	20	Cicindelini	30	Dromicina		Dromica			x	prolongatesignata
10	19315	142205123954	40	Adephaga			50	Carabidae	50	Cicindelinae	20	Cicindelini	30	Dromicina		Dromica			x	foveolata

..If types are present

Syst_cod	Cod_syn	FAMILY	SUBFAM	GENUS	SUBGEN	SPECIES	SUBSPEC	KI	AUTHOR	DATE	KI	SYNGEN	Name Art_Syn	SUBSPEC_Sy	Statu	SYNSPEC
1	19054	1012831	Carabidae	Cicindelinae	Pseudotetracha	Pseudotetrach	corpulenta		(W. Horn	1907)	Megacephala				elongata
2	19054	1014900	Chrysomelidae	Chrysomelinae	Chysolina	Chalcoidea	pusa		(Lopatin	1962)	Chrysomela				purkynei
3	20810	20811	Carabidae	Cicindelinae	Calomera		aphrodisia	panormitana	(Ragusa	1906)	Cicindela				lugens
4	20810	20812	Carabidae	Cicindelinae	Calomera		aphrodisia	panormitana	(Ragusa	1906)	Cicindela				luctuosa
5	1000071	192608150323	Staphylinidae	Paederinae	Achenium		nigriventre		(Fairmaire	1871)	Achenium				lusitanicum
6	1000194	17645	Staphylinidae	Omalinae	Eusphalerum	Eusphalerum	africanum		(Roubal	1915)	Anthobium				tibiale
7	1000210	211	Staphylinidae	Proteininae	Megarthus		nigrinus		(Sahlberg	1876)	Megarthus				sahlbergi
8	1000213	17678	Staphylinidae	Omalinae	Phloeostiba		lapponica		(Zetterstedt	1838)	Phloeonomus				conformis

Code for species

Code for synonyms

SENCKENBERG

Database

Paradox

The screenshot shows a Paradox database record for *Calomera aphrodisia*. Red arrows point to various fields with labels:

- System-Code**: Points to the 'Syst cod' field (20810).
- Subspecies valid**: Points to the 'SUBSPEC' field (panormitana).
- Autor, Jahr**: Points to the 'AUTHOR' field (Ragusa) and 'DATE' field (1906).
- Valid Genus**: Points to the 'GENUS' field (Calomera).
- Species valid**: Points to the 'SPECIES' field (aphrodisia).
- Typusangaben valid**: Points to the 'Typenangaben' field (SDEI: 1 Syntypus, Sicilia, Leg. Ragusa).

At the bottom, a table lists synonyms:

Syst_cod	Cod_syn	SYNGEN	Name Art	SUBSPEC	Status	SYNSPEC	Zusatz	Klammer(SYNAUTH	SYNDATE	Klammer	Date
20810	20811	Cicindela				lugens			Ragusa	1881		
20810	20812	Cicindela				luctuosa			Ragusa	1904		

Synonymus

Labels follow
Database structure

panormitana (Ragusa 1906) Paläarktis

aphrodisia ssp.

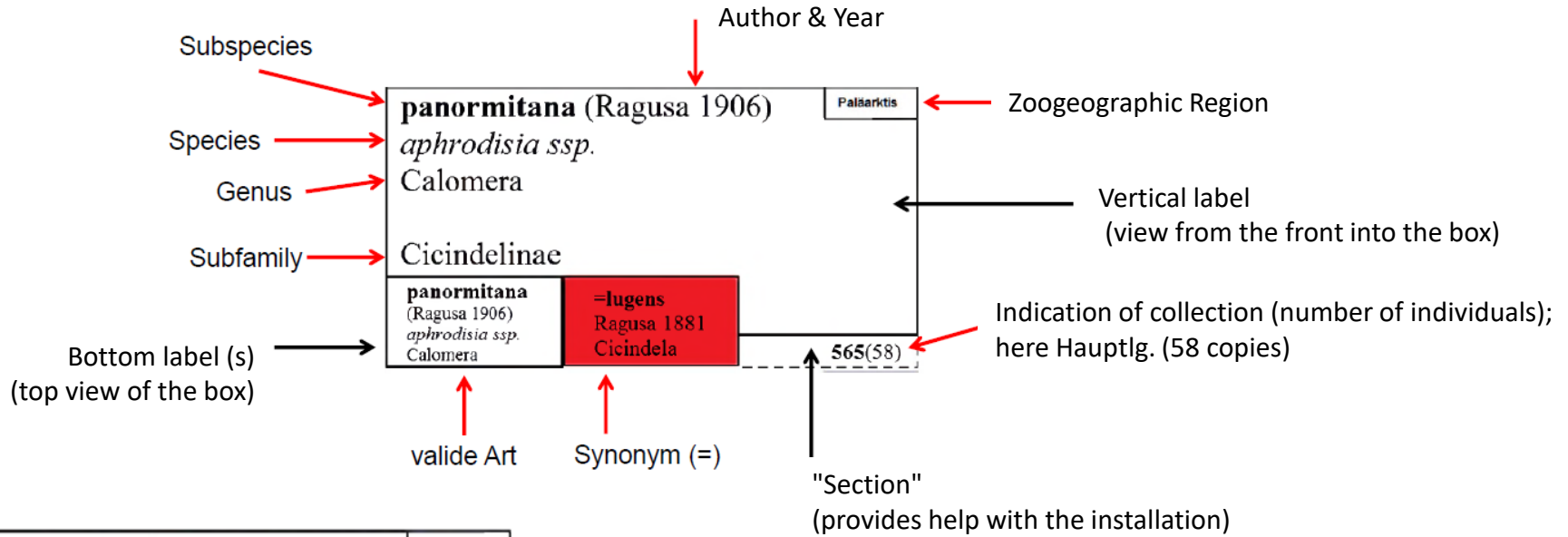
Calomera

Cicindelinae

panormitana (Ragusa 1906) <i>aphrodisia</i> ssp. Calomera	=lugens Ragusa 1881 Cicindela
---	--

565(58)

SENCKENBERG



nemoralis O.F. Müller 1764	Palaarktis
<i>nom. ssp.</i> Carabus (<i>Archicarabus</i>) Carabinae	
nemoralis O.F. Müller 1764 <i>nom. ssp.</i> Carabus (<i>Archicarabus</i>)	148(1302); Weber 196(25) 198-205(794), 236(128); Rensch 8(142), 9(166); Hülbert 1(5), 9(9); Jaros 2(19) Moeck 3(10)

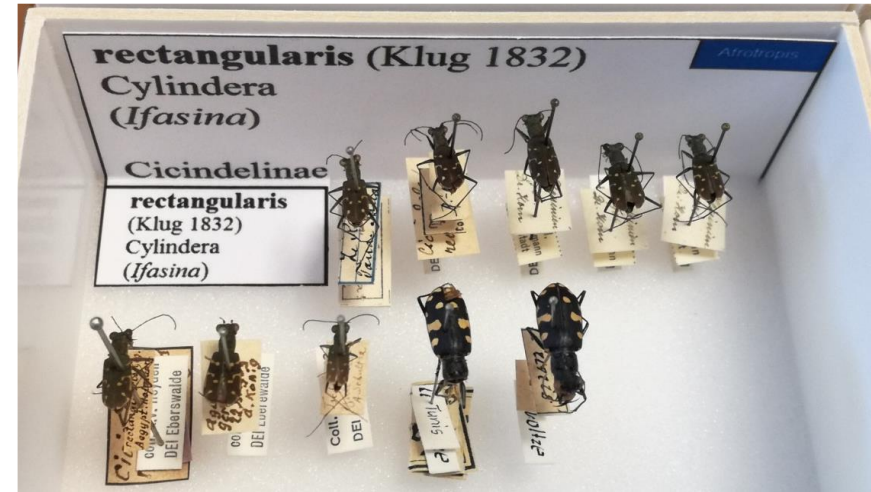
Hauptslg. K 148 (1302 Ex.); Weber K 196 (25 Ex.), K 198-205 (794 Ex.), K 236 (128 Ex.); Rensch K 8 (142 Ex.), K 9 (166 Ex.); Hülbert K 1 (5 Ex.), K 9 (9 Ex.); Jaros K 2 (19 Ex.); Moeck K 3 (10 Ex.)

SENCKENBERG

Senckenberg Deutsches Entomologisches Institut (SDEI)

Collection Organization

- Unit-tray system
- Creation of determination labels
- Preparation
- Systematic sorting and classification



SENCKENBERG

Senckenberg Deutsches Entomologisches Institut (SDEI)

Type pictures

Which is the type...

....or, which type is it?

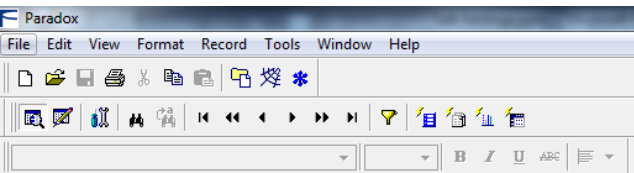
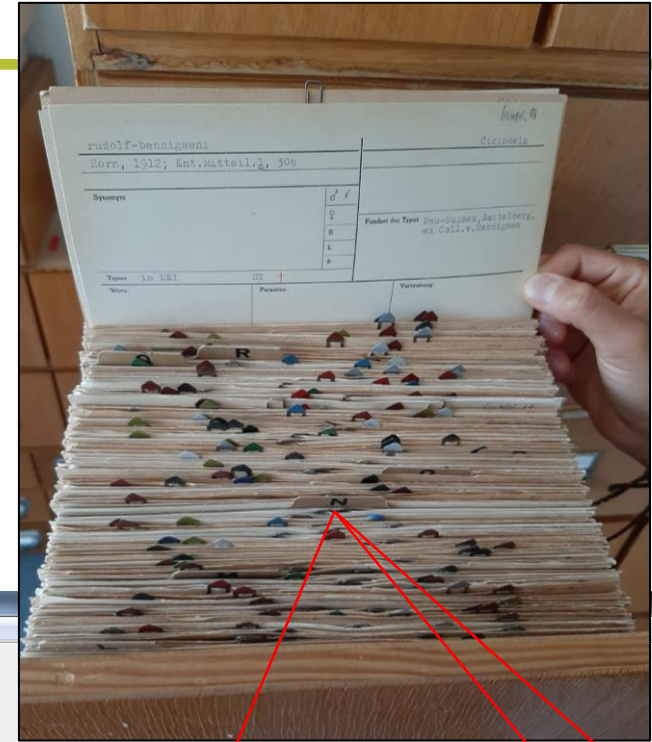


Table: Col_spec.DB			Bem. TAXCOMM	Typenangaben	Typus	Prim	Sekt
OR	ET	AU					
1	X		Tiger beetles of the Madagascan region.... 1-429	SDEI: \$ Holotypus, Antsebitsienne, VI.[19]33, leg. Mellis; 5 Paratypen dto...XI.[19]33; 4 Paratypen, NW Madagascar, R. Ramena, XII.1	HT	1	PT 11
2	X		Arch. Nat. 25, 118	SDEI: Lectotypus (des. Assing), India orientali., leg. Helfer, coll. Kraatz	LT	1	
3	X		Arch. Nat. 25, 114	SDEI: Lectotypus, 1 Paralectotypus (des. Bordoni), India or., leg. Bacon.	LT	1	PLT 1
4	X		Dtsch. Ent. Ztschr., 196	SDEI: \$ Holotypus, Ind. or., ex coll. Dormer.	HT	1	
5		X	Not. Leyd. Mus. 29, 63	SDEI: \$ Holotypus, Queensland borealis, in coll. Horn; [NR. 18, durch Bates]	HT	1	
6	X		Dtsch. Ent. Ztschr., 53	SDEI: \$ Paratypus, Lindi, XII.1896, leg. Reimer, coll. Horn.			PT 1
7	X		Not. Leyd. Mus. 19: 236-237	SDEI: Lectotypus (des. Schüle), British Afrika, Blantyre, leg. de Lange, coll. Horn.	LT	1	
8	X		Stett. Ent. Ztg. 68: 331	SDEI: Lectotypus, 5 Paralectotypen (des. Schüle), E. Afrika, Beira, II., III, IV.1906, leg. Sheppard, coll. Horn.	LT	1	PLT 5
9	X		Ent. Blätter 21: 136	SDEI: 1 Lectotypus, 3 Paralectotypen (des. Schüle), Kapiri, IX.1912, Miss. Agric., ex Museé du Congo Belge; Katanga Distr., centr. Afri	LT	1	PLT 3
10	X		Trans. S. Afr. Phil. Soc. 4, 71	SDEI: \$ Holotypus, ohne Fundort, 62. Lake N'Gami Region (wahrscheinlich der Fundort), coll. Andersson.	HT	1	
11	X		Trans. S. Afr. Phil. Soc. 7, 90	SDEI: Lectotypus, 1 Paralectotypus (des. Schüle), Natal: 3 Ex. Escurt; 2 Ex. Frere; 1 Ex. ohne Fundort, Nr. 29; ex coll. Péringuey.	LT	1	PLT 1
12	X		Stett. Ent. Ztg. 90, 317	SDEI: 1 \$ Holotypus, Katanga.	HT	1	
13	X		Trans. S. Afric. Philos. Soc. 6(2): 4	SDEI: 1 Syntypus, ohne Fundort durch Péringuey, coll. Horn.	ST	1	
14	X		Trans. Ent. Soc. London, 448	SDEI: 1 Syntypus, ohne Fundort, Nr. 30, ex coll. Péringuey.	ST	1	
15	X		Arch. Naturg. 79(A 11): 25	SDEI: 5 Syntypen, Celebes, leg. Kibler, Tondkallace, coll. Horn.	ST	5	
16	X		Ent. Ztg. 68: 331-337	SDEI: 3 Paratypen, Australia, Northern Territory, Darwin, I.1898, leg. Dormer, Coll. ex sublectis: Madag. 1898-99	PT	3	

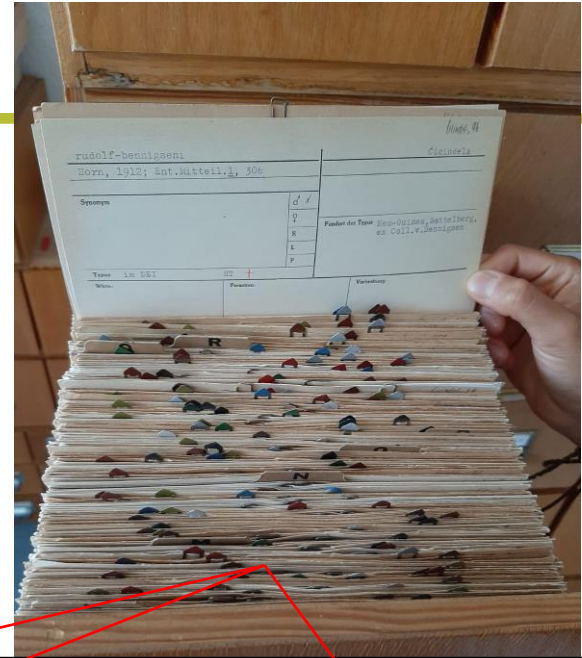
SENCKENBERG

Senckenberg Deutsches Entomologisches Institut (SDEI)

Type pictures

Which is the type...

....or, which type is it?



Typenfotos Carabidae (11.07.2018).xlsx - Microsoft Excel

A	B	C	D	E	F	G	H	I	J	K	L	M	N	O	P	Q	R	S	T
Type-Foto-Nr.	Type	total number of pr.types	label image / scann	dorsal image	lateral image	image of fragments or genitalia	sex	Setup Magnification	Scale px/mm	box number (new)	Genus	Species	Subspecies/Var./Ab	Kl. auf	Author	Date	Kl. zu	Syst cod	Cod syn
302423	ST	1	1	1			male?	w-2	127	1	Anthia	andersonii	bennigseni		Sternberg	1906		162601233616	
302424	ST	1	1	1			female	w-16	159	2	Anthia	bucolica			Kolbe	1894		162701234312	
302425	ST	1	1	1			male	w-2	127	3	Anthia	calva			Sternberg	1907		162701005311	
302426	ST	1	1	1			male	w-25	102	6	Anthia	aequecostata			Sternberg	1907		162701000717	162701004511
302427	ST	1	1	1			female	w-14	181	7	Anthia	galla	lesnei		Sternberg	1906		162701005718	
302428	ST	1	1	1			female	w-2	127	10	Anthia	grandis			Sternberg	1906		162601234112	162601234818
302429	i.l.	1	1	1			female	w-1	254	19	Eccooptera	phila			Kolbe	i.l.		162901012313	
302430	ST	1	1	1			female	w-c	276	21	Creagriss	binoculus			Bates	1892		163103223313	
302431	ST	1	1	1			female	w-1	254	24	Pogonoglossus	horni			Sloane	1907		163103012020	
300501	ST	1	1	1			?	Leica		25	Apotomus	hirsutulus			Bates	1892		1404092319	
300502	LT	1	1	1			?	Leica		25	Apotomus	latigena			Reitter	1892		1404092312	
300503	LT	1	1	1			?	Leica		25	Apotomus	adustipennis			Reitter	1892		1404092310	172407154718

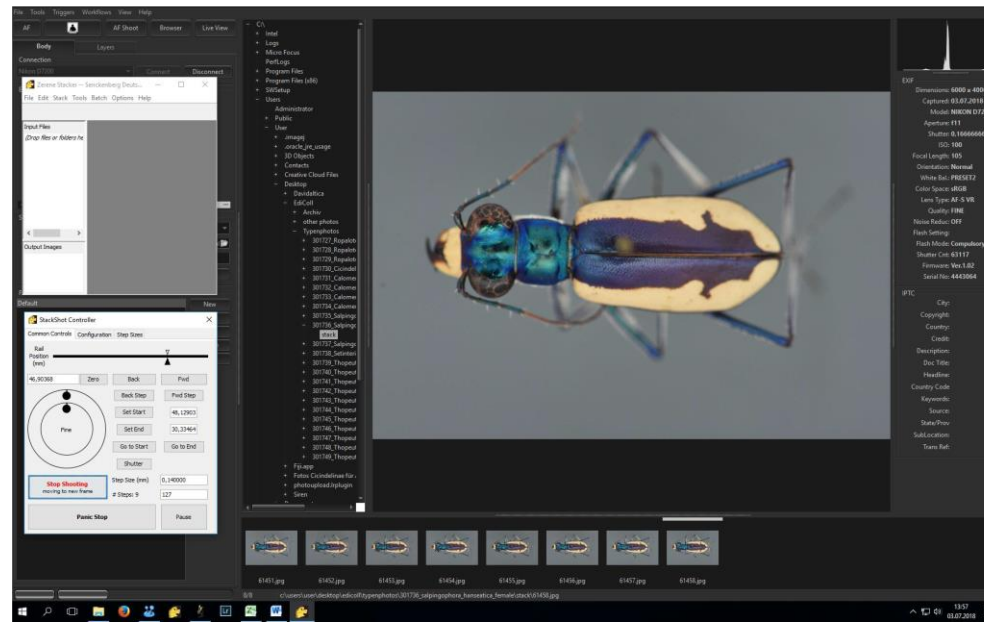
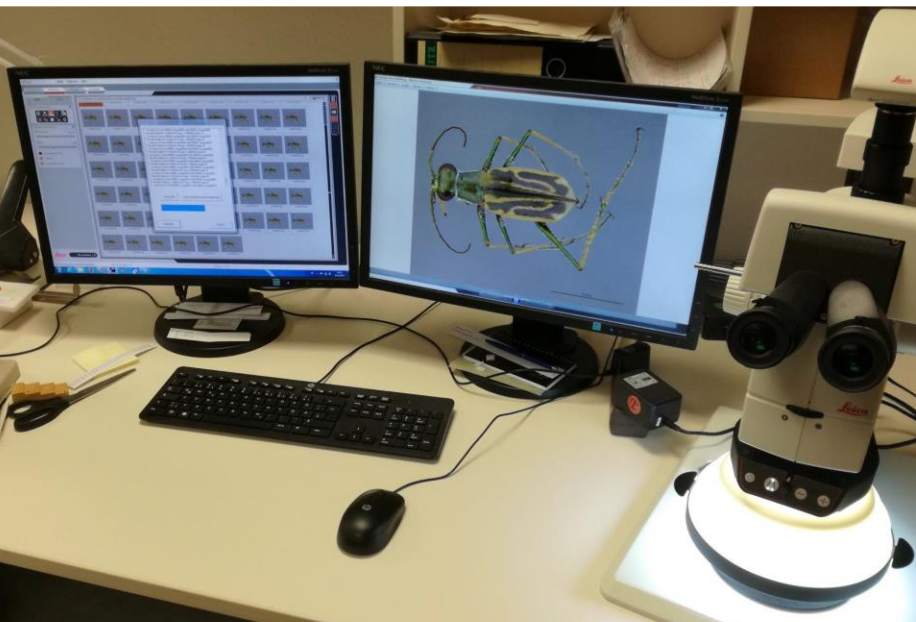
Photos!

SENCKENBERG

Senckenberg Deutsches Entomologisches Institut (SDEI)

Type pictures

- Leica System (<1 cm)
- Workstation Nikon (>1cm)
- Labels are scanned
- Photos and labels – SNG Drive



SENCKENBERG

Senckenberg Deutsches Entomologisches Institut (SDEI)

Type pictures

- Leica System (<2 mm)
- Workstation Nikon (>2mm)
- Labels are scanned
- Photos and labels – SNG Drive

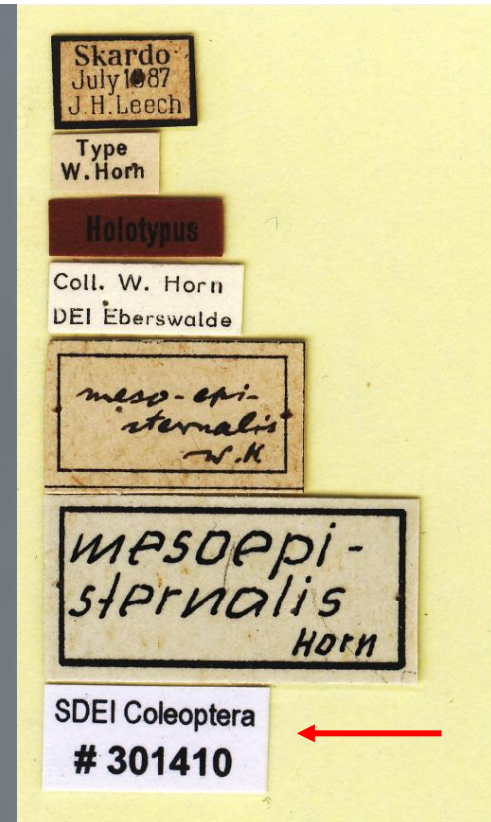
Quality!

Stacking

Rename photos

Add scalebar

Clean specimens...



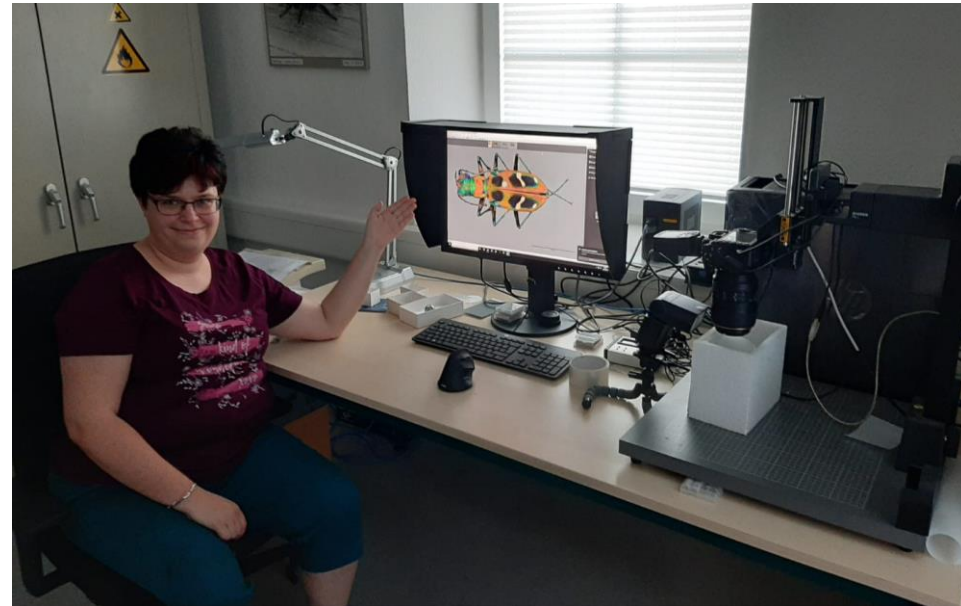
301410_Cylindera_mesoepiste
rnalis_male_dorsal_2-stacked-
final

SENCKENBERG

Senckenberg Deutsches Entomologisches Institut (SDEI)

Not easy. Not cheap

1. Identification & Taxonomic update
2. Unit tray organization
3. Photograph types (quality pictures)
4. Photograph labels
5. Transcription of the label
6. Clean specimen
7. Transfer specimens from boxes....



SDEI:

250,000 Euros

260,000 spec.

~3,000 types

1 person ~7 boxes/week + label - spec.

1 person ~50 spec./week - photos

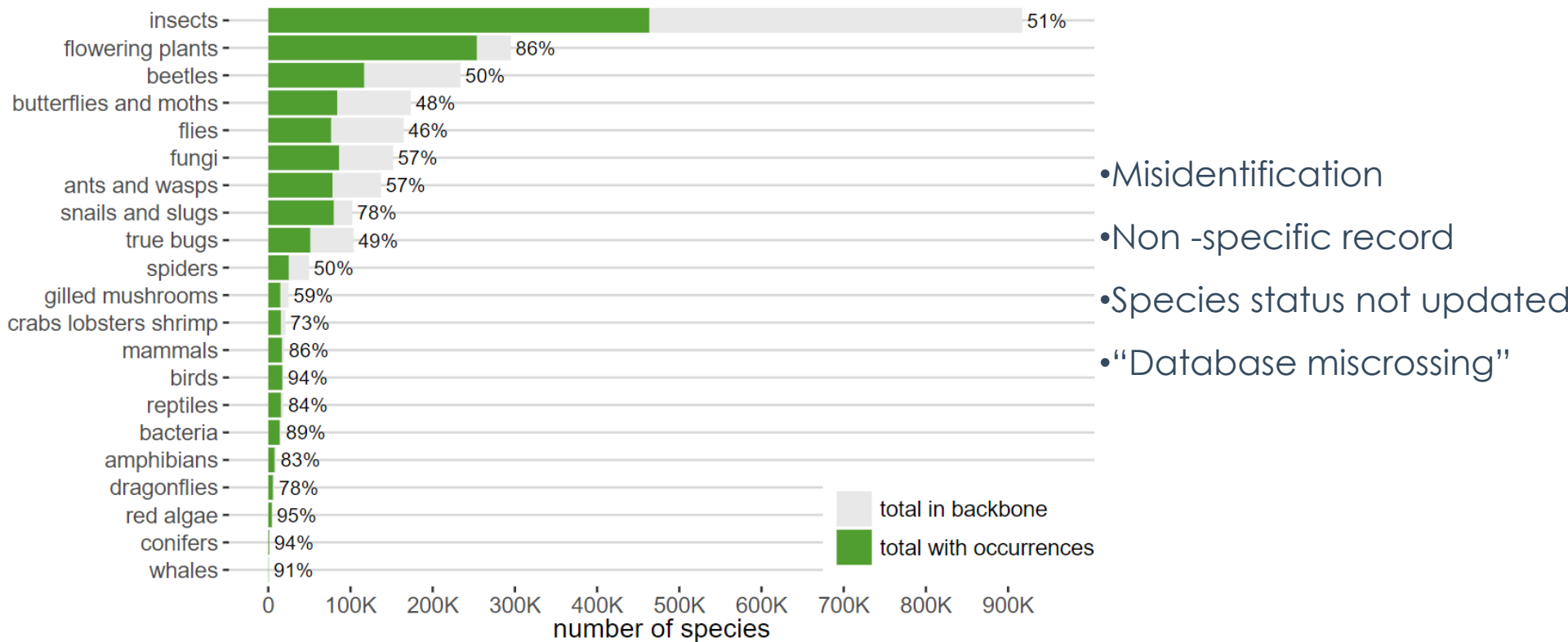
1+1/2 technicians*

+2 years

SENCKENBERG

OUTPUT...

- **Global Biodiversity Information Facility (GBIF)**
- **USNM** >34 million insect specimens - only 421,698 records in GBIF
- **SDEI** ~3 million insect specimens - 0 records in GBIF



SENCKENBERG

Taxonomic Revision of the genus *Mesomphalia* Hope, 1839 (Insecta, Coleoptera, Chrysomelidae)

MARIANNA V. P. SIMÕES^{1,3} & MARCELA L. MONNÉ^{2,3}

¹Division of Entomology, Biodiversity Research Institute & Department of Ecology and Evolutionary Biology, University of Kansas, Lawrence, Kansas 66045, U. S. A. E-mail: mariannavpsimoes@gmail.com

²Museu Nacional, Universidade Federal do Rio de Janeiro, Quinta da Boa Vista, São Cristóvão, 20940-040, Rio de Janeiro, Brazil.

³Fellow of the Conselho Nacional de Desenvolvimento Científico e Tecnológico (CNPq)

Mesomphalia gibbosa (Fabricius, 1781)

(Figs. 1–54, 91–97, 156, 158)

→ *Cassida gibbosa* Fabricius, 1781: 112; 1787: 65; 1792: 302; 1801: 403; Gmelin, 1790: 1638; Olivier, 1790: 388; 1808: 928; Herbst, 1799: 346; Schönherr, 1817: 225.

→ *Mesomphalia gibbosa*: Hope, 1839: 94; 1840: 91; Boheman, 1850: 223; 1856: 38; 1862: 102; Gemminger & Harold, 1876: 3632; Wagnener, 1881: 63; Spaeth, 1901: 339; 1914: 33; Blackwelder, 1946: 737; Borowiec, 1996: 192; 1999: 117; Simões & Monné, 2008: 713; Flinte *et al.*, 2008: 200; 2009: 589; Borowiec & Takizawa, 2011: 448.

→ *Stolas gibbosa*: Haitlinger, 1991: 397.

Get data How-to Tools Community About

⊕ ✎ 🔍 🗨️ Login

SPECIES | HOMOTYPIC SYNONYM

Mesomphalia gibbosa (Fabricius, 1781)

source: Catalogue of Life

Synonym of *Neochlamisus gibbosus* (Fabricius, 1777)

OVERVIEW METRICS REFERENCE TAXON ⇄

121 OCCURRENCES

2 OCCURRENCES WITH IMAGES



SEE GALLERY

GBIF

1 GEOREFERENCED RECORD



SENCKENBERG

Web of Science (08/06/2020)

Entomology* -

bioclim OR Species distribution modeling OR Ecological niche modeling OR macroecology OR spatial ecology

2000-2010 = 225



2010-2020 = 487

SENCKENBERG

Web of Science (08/06/2020)

Evolutionary Biology* -

bioclim OR Species distribution modeling OR Ecological niche modeling OR macroecology OR spatial ecology

2000-2010 = 521



2010-2020 = 1,707

FEATURE

The Insect Apocalypse Is Here

What does it mean for the rest of life on Earth?



Climate change on track to cause major insect wipeout, scientists warn



Nature crisis: 'Insect apocalypse' more complicated than thought

Environment

Here's how we know that the UK's insects are dying out



Cry of cicadas

The insect apocalypse is not here but there are reasons for concern



What we need...

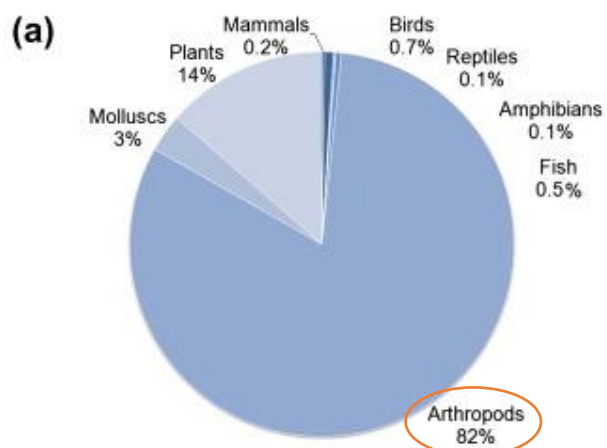
- +Investment
- + New tools
- + Database
- + Space

AM_ENT

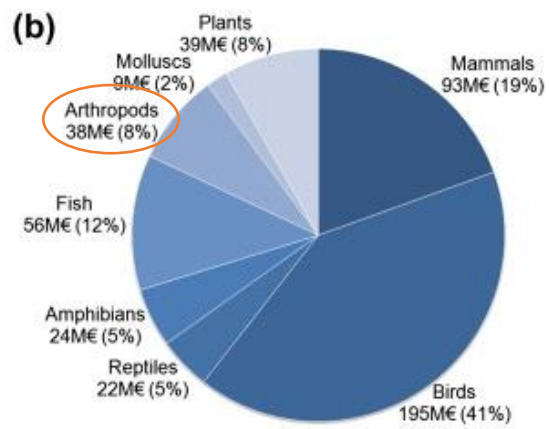


AMNH_PBI 00388325

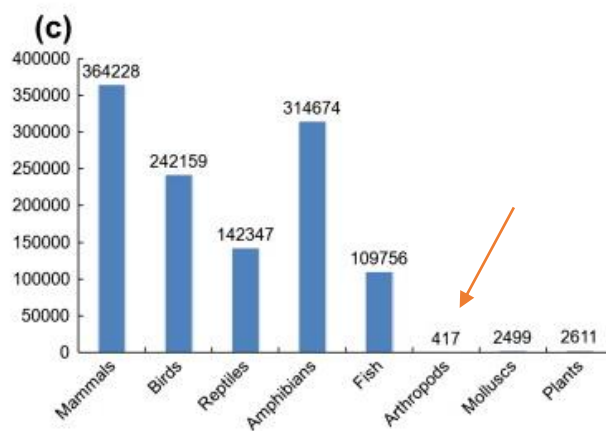
Unique identifiers



Diversity



Total Investment per taxon



Average funding per species

SENCKENBERG

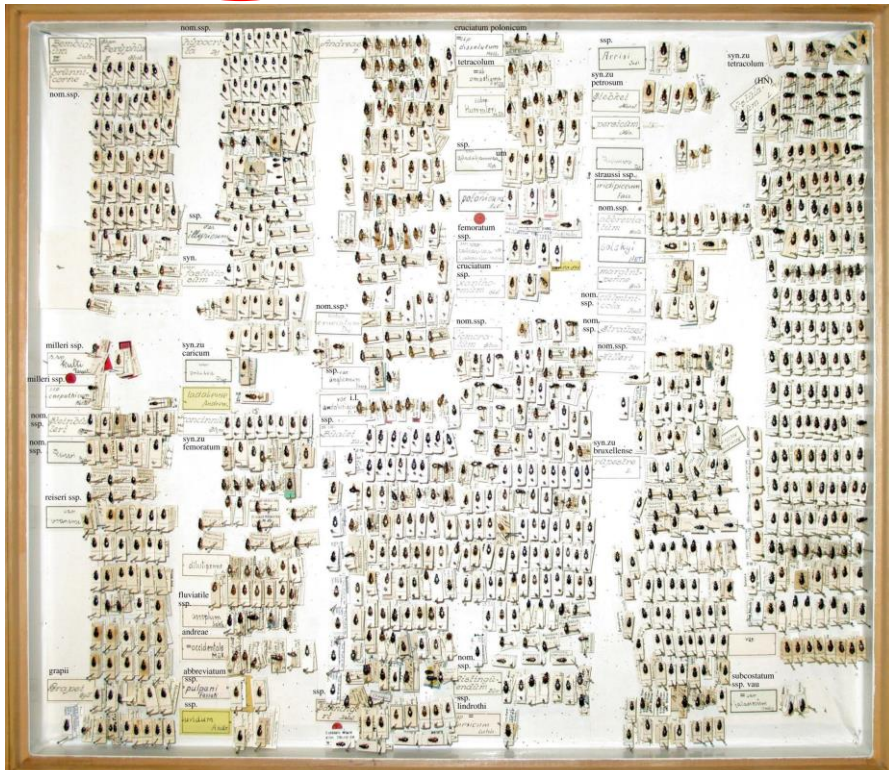
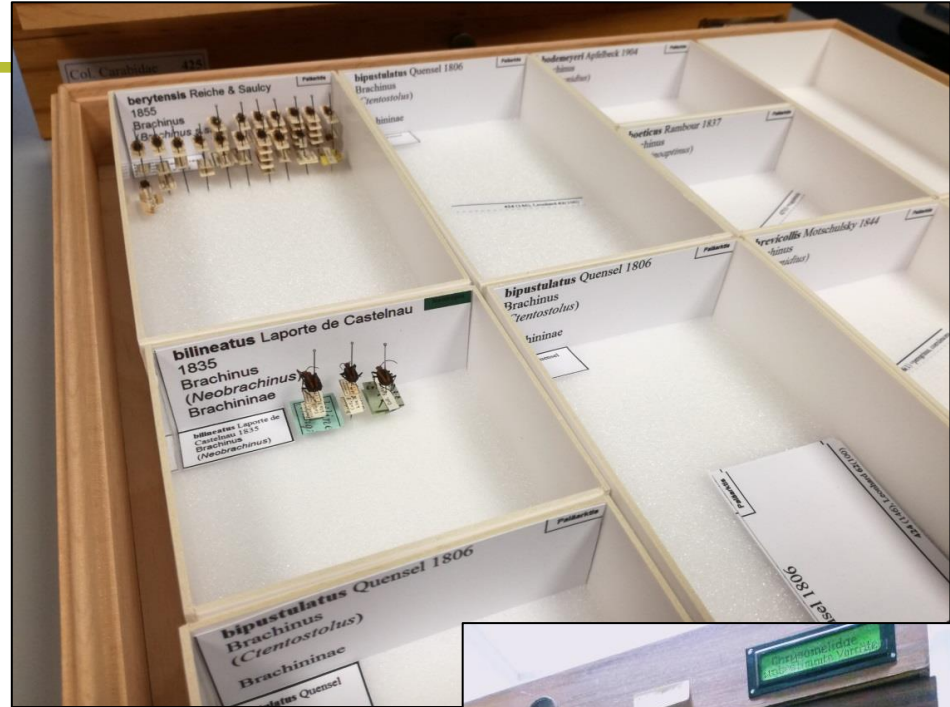
What we need..

- +Investment
- + New tools
- + **Database**
- + Space



SENCKENBERG

+Investment
+ New tools
+ Database
+ **Space**



1:3...
1:10...
1:20...

Questions?

Dr. Marianna Simões
Researcher & Curator Coleoptera
Senckenberg Deutsches Entomologisches Institut (SDEI)



marianna.simoes@senckenberg.de



[@beetler785](https://twitter.com/beetler785)



[msimoes123](https://github.com/msimoes123)

Member of the



FAIR Heritage

Digital Methods, Scholarly Editing and
Tools for Cultural and Natural Heritage



LE STUDIUM
Loire Valley
Institute for Advanced Studies

